

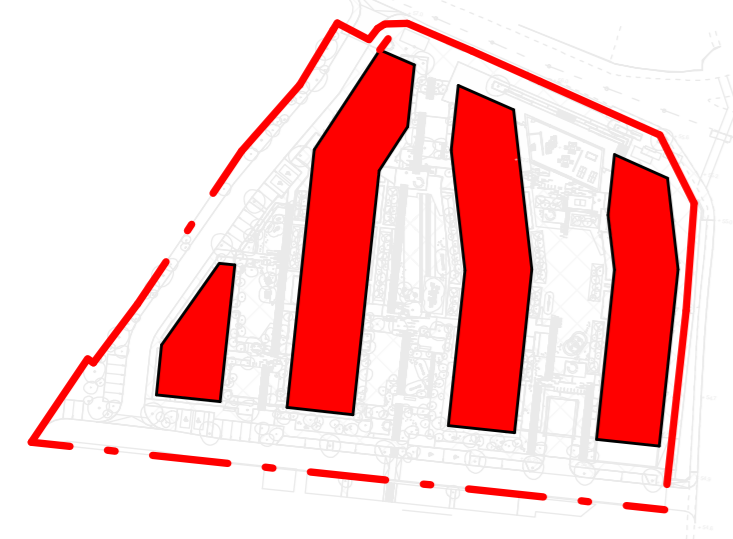
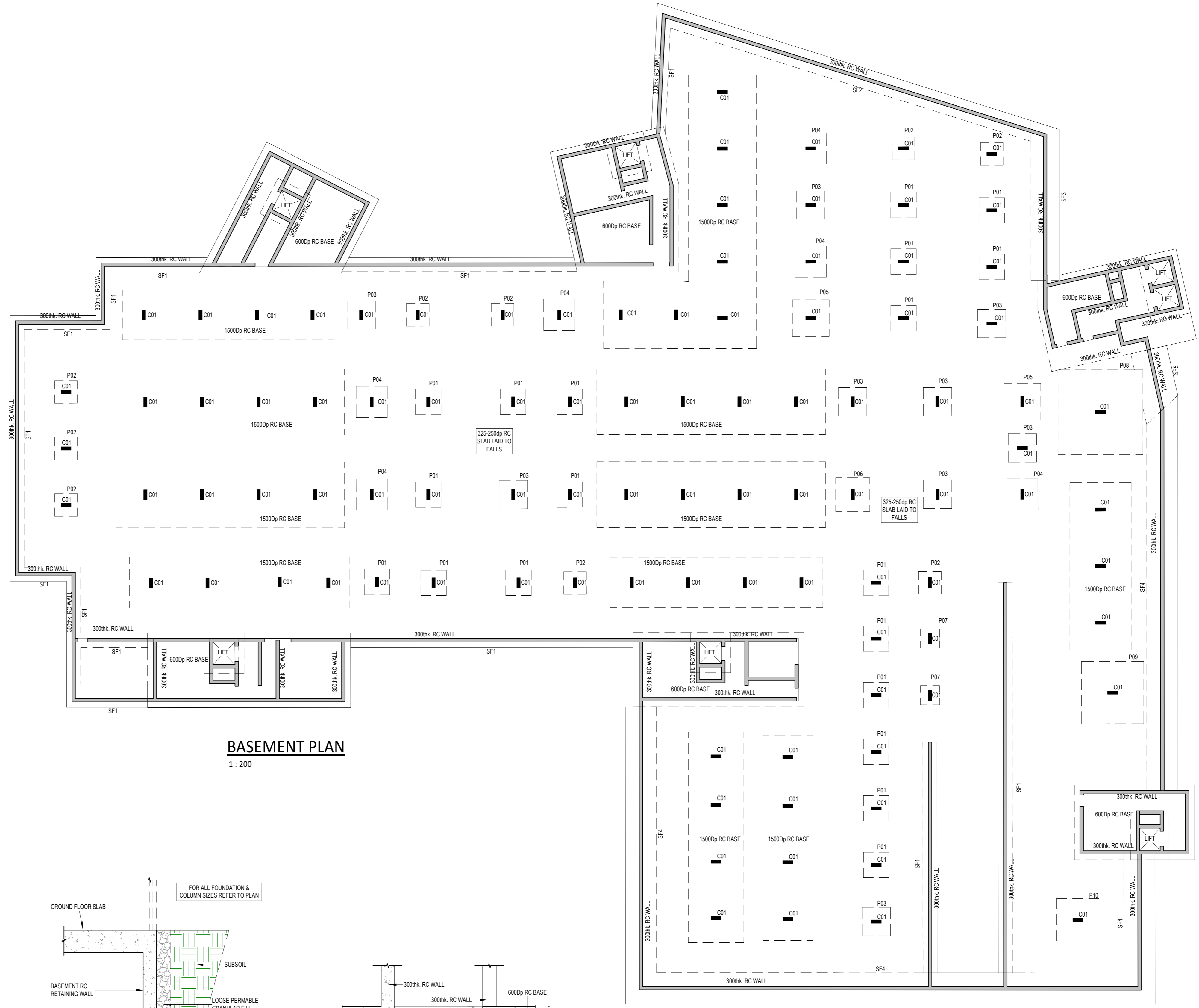
(C)
 This Model and any design herein is the copyright of the DBFL and must not be reproduced without their written consent. All drawings remain the property of the Consultants.
 Figured dimension only to be taken from this drawing. All dimensions to be checked on site. Consultants to be informed immediately of any discrepancies before work proceeds.

NOTE:
 SIZING/POSITIONING OF STRUCTURAL ELEMENT SHOWN, INCLUDING FOUNDATIONS, ARE PRELIMINARY ONLY AND ARE SUBJECT TO CHANGE BASED ON FURTHER GEOTECHNICAL IN-SITU TESTING AND AT DETAILED DESIGN PHASE

PAD FOUNDATION SCHEDULE	
Type Mark	Description
P01	2250x2250x600Dp RC PAD
P02	2000x2000x500dp RC PAD
P03	2500x2500x600dp RC PAD
P04	2750x2750x750Dp RC PAD
P05	3250x3250x750dp RC PAD
P06	3000x3000x750dp RC PAD
P07	1700x1700x450dp RC PAD
P08	7500x7500x1875dp RC PAD
P09	5500x5500x1450dp RC PAD
P10	3750x3750x950dp RC PAD

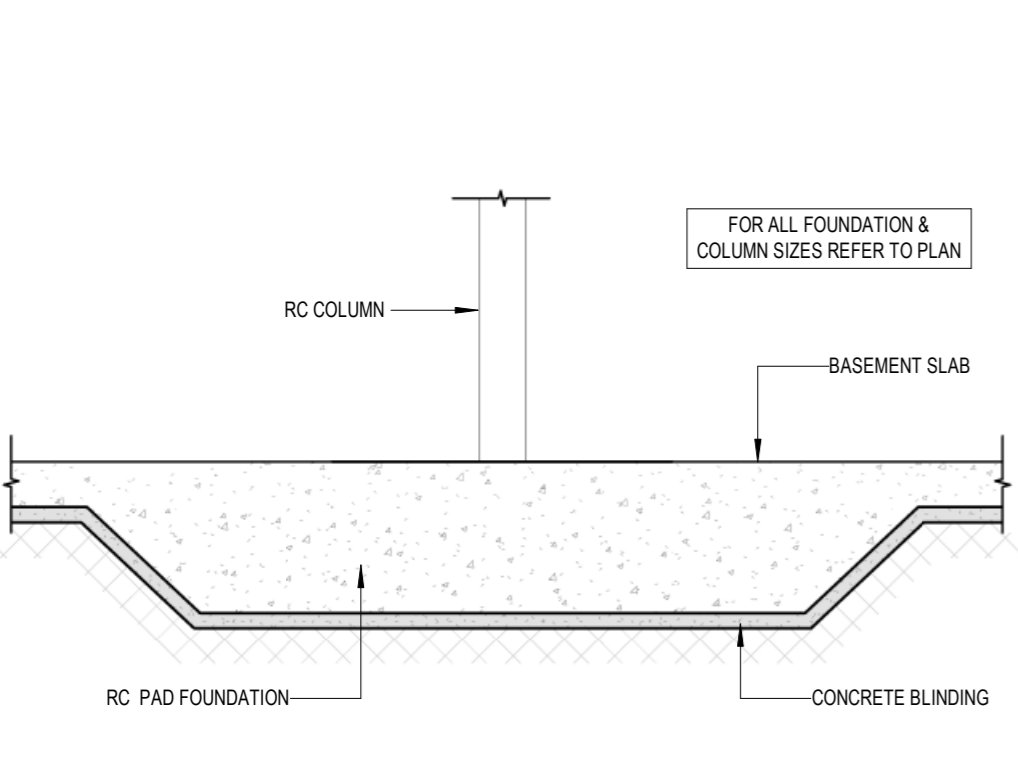
STRIP FOUNDATION SCHEDULE	
Type Mark	Description
SF1	1250x450 Dp RC STRIP FOOTING
SF2	1750x450 Dp RC STRIP FOOTING
SF3	2500x650 Dp RC STRIP FOOTING
SF4	2750x750 Dp RC STRIP FOOTING
SF5	3250x850 Dp RC STRIP FOOTING
SF6	3000x450 Dp RC STRIP FOOTING
SF7	3600x450 Dp RC STRIP FOOTING
SF8	2250x450 Dp RC STRIP FOOTING
SF9	4250x450 Dp RC STRIP FOOTING
SF10	1500x450 Dp RC STRIP FOOTING
SF11	2000x450 Dp RC STRIP FOOTING
SF12	2700x450 Dp RC STRIP FOOTING
SF14	3450x450 Dp RC STRIP FOOTING

COLUMN SCHEDULE	
REF	DESCRIPTION
C01	300x900 RC COLUMN
C02	450sq RC COLUMN

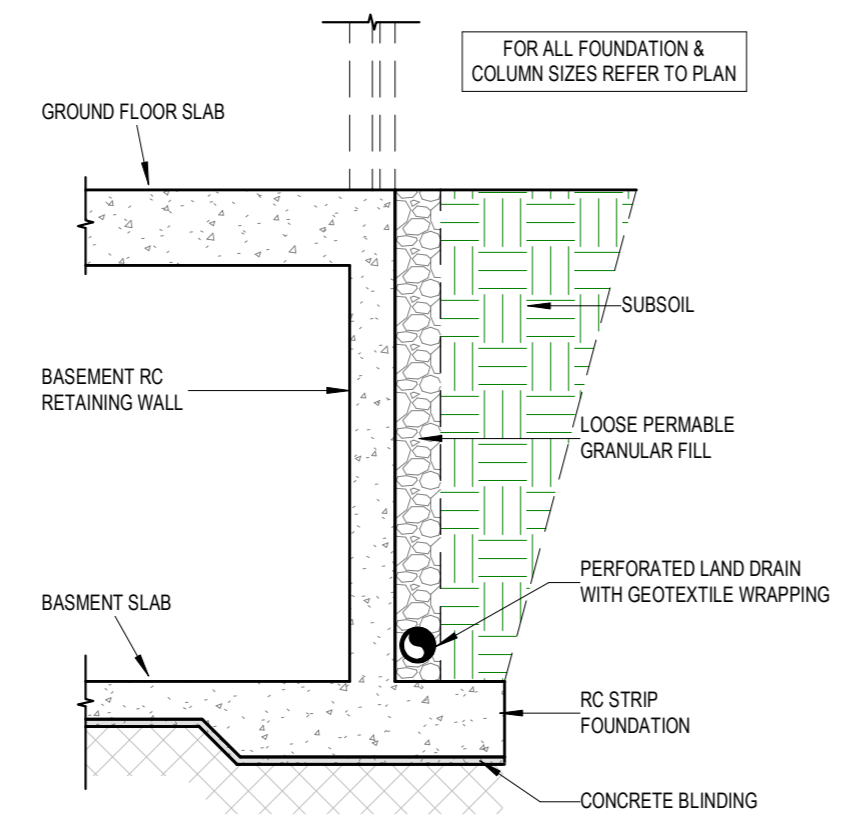


keyplan
1 : 2000

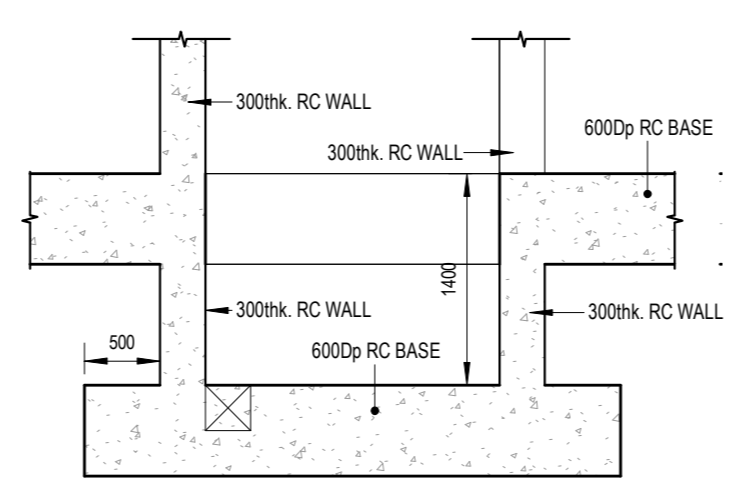
BASEMENT PLAN
1 : 200



TYP. PAD FOUNDATION SECTION
1 : 50



TYP. BASEMENT SECTION
1 : 50



TYP. LIFTPIT SECTION
1 : 50

REV	date	description	CRD	KCC
0	22-06-2022	ISSUED FOR PLANNING		

client approval: A - Approved, B - Approved with comments, C - Do not use
 issue purpose: PLANNING

DBFL Consulting Engineers
 Civil, Structural & Transportation Engineering
 www.dbfl.ie

DUBLIN OFFICE: Ormond House, Upper Ormond Quay, Dublin 7, Ireland. PHONE: +353 1 400 4000
 WATERFORD OFFICE: Unit 2, The Chandlery, 1-2 O'Connell Street, Waterford, Ireland. PHONE: +353 51 309 500

project ref: PROPOSED RESIDENTIAL DEVELOPMENT AT SWORDS RD, SANTRY, PHASE 2
 drawing title: BASEMENT PLAN

client: DWYER NOLAN DEVELOPMENTS

designed by	author	scale	sheet size
KDC	GD	AS SHOWN	A1

drawing no: 200060-X-10-Z-801-DR-DBFL-SE-1001
 revision: 0